

2022 Annual Report

NWR Northwest Regional Primary Care Association



PARTNERS, SUPPORTERS, SPONSORS & VOLUNTEERS

BUSINESS INTELLIGENCE

COMMUNITY HEALTH IMPROVEMENT

CONFERENCE HIGHLIGHTS

MEMBER SERVICES

NWRPCA MISSION, VISION & VALUES

A WORD FROM OUR CEO

DEAR NORTHWEST HEALTH CENTER PARTNERS:

It's been a remarkably challenging three years both globally and nationally. We at NWRPCA want to express again our deepest thanks to all of you for so admirably and unselfishly serving your communities during this incredibly difficult time, and for doing so longer than certainly many of us had anticipated. All of you on the community health front line have endured so much with such grace in helping to navigate us through the worst global public health crisis in over a century. What I wrote after the first full year of the pandemic remains truer than ever: Please know that we so deeply respect you for what you've done these past three years and how you've done it, and that we offer our deepest condolences to those of you who have lost loved ones, colleagues or friends to COVID-19.

While the pandemic continued to largely dominate the health care agenda in '22, we saw positive signs of emerging new models in—and attitudes towards—primary care and community health. Expanded telehealth was just one of the more obvious examples; we've also seen greater interest in the role of Community Health Workers, for example, and the need for better integration of effort between public health and primary care. There is, of course, the sobering balance to such encouraging change: the tsunami we now face—not surprisingly given the pandemic's “earthquake”—of extreme mental and behavioral health challenges among our patients (ie. the worsening opioid epidemic) and the exhaustion of our own CHC staff, administrators and board members. As I wrote in this space in spring '21, what we face in community health isn't just a pandemic but rather an on-going syndemic: “a set of linked health problems involving two or more afflictions, interacting synergistically.” This is the kind of complex, deep-seated health crisis that the Community Health Center model was designed to address and is so well-suited to face. It's in our DNA.

We're proud of what we developed and offered in 2022 both to capitalize on such positive transformations in community health and to address “head-on” those stark challenges related to the broader syndemic. We also know, though, how much remains to do to move us beyond these immediate crises. And we know too that it's collaboration with our member CHCs, partner State Primary Care Associations and other terrific partners that remains the bedrock upon which we pursue such efforts. For this we are extremely grateful: the continuing collaboration with member CHCs and partners such as Sea Mar Community Health Centers, Yakima Valley Farm Workers Clinic and the Washington Association for Community Health around our Partners in Care conference, the third successful year of our nine-month “Northwest Public Health-Primary Care Leadership Institute” in partnership with the Northwest Center for Public Health Practice, the on-going development of our CHW Institute with the support of the RCHN Foundation, and so many other examples.

As always, we continue to seek innovative ways to best serve you, deeply value our on-going dialogue to improve together, and look forward to even more productive collaboration in 2023 and beyond!



Bruce Gray
NWRPCA Chief Executive
Officer



CURRENT LEADERSHIP & STAFF

Ashley Andersen, Marketing Specialist

Pamela Bertelson, Event Planner

Sheryl Brannon, Interim Director of Education & Training

Christian Castro, Community Health Improvement Specialist

Nat Cortes, Education & Training Associate

Alexcia DeVasquez, Data & Information Specialist

Seth Doyle, Director of Strategic Initiatives

Adam Fixler, Accounting & Human Resources Specialist

Bruce Gray, Chief Executive Officer

Sonia Handforth-Kome, Chief Financial Officer

Janeane Harwell, Development Specialist

Harjot Kaur, Executive Program Support Associate

Georgia Mauney, Member Services Specialist

Noomi Odabashian, Rotations Coordinator

Emily Rademacher, Interim Chief Operating Officer

Nick Serrano-Piche, Director of Communications and Support

Chris Spencer, Distance Learning Specialist

Nathan Thomas, Health Professions Pathways Specialist

Kelly Volkmann, Project Director, Community Health Worker Institute

Robyn Weiss, Director of Workforce Development

2022 BOARD OF DIRECTORS

EXECUTIVE COMMITTEE

Chair: *Jesus Hernandez, CEO, Family Health Centers, WA*

Vice Chair: *Tawny Buck, CEO, Girdwood Health Clinic, AK*

Secretary: *Linda Maxon, CEO, Coast Community Health Center, OR*

Treasurer: *Mike Baker, CEO, Heritage Health, ID*

Immediate Past Chair: *Patrick Luedtke, Medical Dir. DHHS, Lane County, OR*

Members at Large:

Kevin Munson, *CEO, Mat-Su Health Services, AK*

Aaron Houston, *CEO, Family Health Services, ID*

John Browne, *CFO, Community Health Assn of Spokane, WA*

BOARD MEMBERS

Alaska:

Craig Ambrosiani, *ED, Seward Community Health Center, AK*

Eric Gettis, *Dir. of Practice Mgmt, SEARHC, AK*

Idaho:

Heidi Hart, *CEO, Terry Reilly Health Services, ID*

Mindy Stosich-Benedetti, *CEO, Health West, ID*

Oregon:

Gil Munoz, *ED, Virginia Garcia Memorial Health Center, OR*

William North, *CEO, Rogue Community Health, OR*

Washington:

Jim Coffee, *CEO, Cowlitz Family Health Center, WA*

Esther Lucero, *CEO, Seattle Indian Health Board, WA*

NORTHWEST REGIONAL PRIMARY CARE ASSOCIATION (NWRPCA)

is a not-for-profit 501(c)3 membership-driven organization that serves community and migrant health centers (C/MHCs) in Alaska, Idaho, Oregon, and Washington (federal Region X).

Founded in 1983, NWRPCA offers a range of programs and services to support and strengthen C/MHCs in the Northwest. We work to ensure equal access, regardless of one's financial or insurance status, to primary care and preventive health care for all residents living in the region.

OUR MISSION

NWRPCA is a member organization that strengthens community and migrant health centers in the Northwest by leveraging regional power and resources on their behalf.

OUR VISION

With the support of NWRPCA, our community and migrant health centers will be exemplary professional homes for their staffs and will serve their communities well.

OUR VALUES

- **Community:** We support the consumer-driven governance of the community and migrant health center.
- **Social Justice:** We advocate for social justice, particularly for the right to wellness and health.
- **Respect:** We demonstrate respect for each other and those we serve.
- **Trust:** We build trust by acting with honesty and integrity.
- **Diversity:** We celebrate diversity as the pathway to insightful work and enriched relationships
- **Excellence:** We constantly aspire to excellence through innovation and continuous improvement.

OUR PROGRAMS & STRATEGIC QUADRANTS

Business Intelligence for Region X (BIX) • Education & Training
Community Health Improvement • Member Services
Workforce Development



NWRPCA MISSION, VISION & VALUES

MEMBER SERVICES

CONFERENCE HIGHLIGHTS

COMMUNITY HEALTH IMPROVEMENT

BUSINESS INTELLIGENCE

PARTNERS, SUPPORTERS, SPONSORS & VOLUNTEERS

A SNAPSHOT OF THE HEALTH CENTERS WE SERVE

NWRPCA proudly serves the 102 community & migrant health centers (C/MHCs) in Region X.

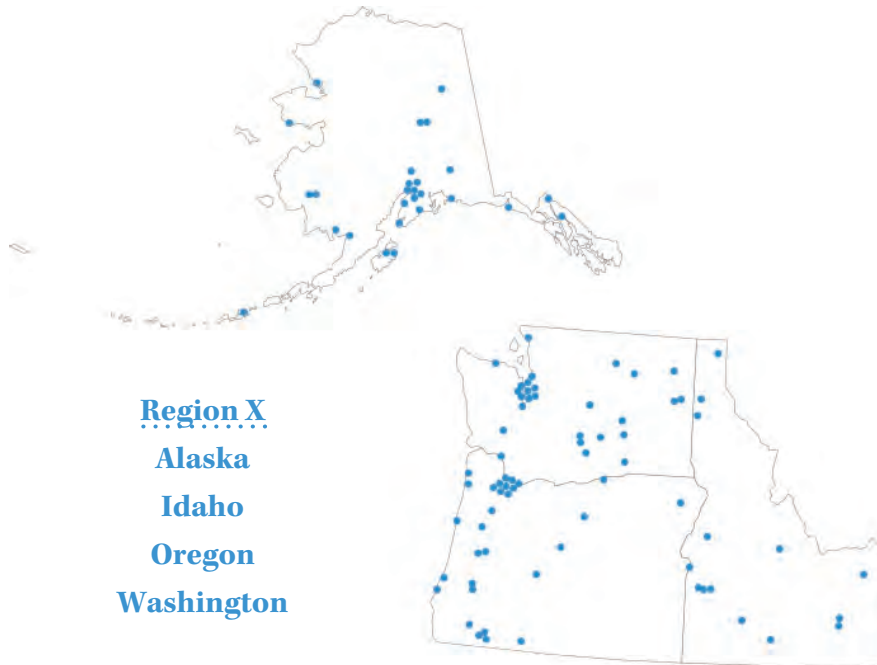
In 2022, 88% of Region X CHCs were members of NWRPCA. Membership is also offered to individuals and organizations who support the mission of the CHC movement.

In **2022**



region X health centers served

- **125,176** migrant / seasonal workers
- **134,457** experiencing homelessness
- **728,419** living near public housing
- **432,608** speaking in a primary language other than English
- **1,293,423** living at or below the poverty line
- **1,154,675** covered by Medicaid
- **320,187** without insurance



In 2021, Region X Health Centers

Served more than **1,800,000** patients



Operated at **1000+** locations

Experienced and overall **39%** increase in patients since 2012

MEMBER SERVICES: SERVING THOSE WHO SERVE ALL

As a membership association, NWRPCA values our members as our greatest asset and our first priority.

Through collaboration, outreach, and data collection with health centers, NWRPCA is able to offer its members and other health centers in Region X outstanding benefits in workforce development, education and training, business intelligence, networking and partnerships, and high-level advocacy.

One new member joined NWRPCA in 2022:

*Cascadia Health
Rogue Health*

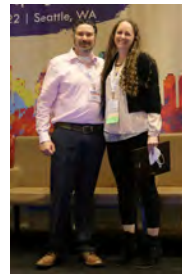
2022 NWRPCA Annual Awards Recipients

HELPING US HELP YOU AWARD

Cori Garcia-Hansen,

*Area Health Education Center for Western Washington, AHEC WW,
Whatcom Community College*

This award honors an individual or an organization who has helped NWRPCA better serve its member health centers.



SUMMIT AWARD

Aviva Health and Neighborhood Health Center

This award honors someone within NWRPCA membership who has reached a singular level of achievement in a particular area of expertise or service, focusing in 2022 on **Employer of Choice**.



ANITA MONOIAN LEGACY AWARD

Teresita I. Batayola and Vickie Nussbaum

This award honors an individual who has dedicated their career to solving the problems of health, poverty, and human rights and who has contributed toward the mission and recognition of community and migrant health centers in the Northwest region.



MEMBER SERVICES
CONFERENCE HIGHLIGHTS
COMMUNITY HEALTH IMPROVEMENT
BUSINESS INTELLIGENCE

PARTNERS, SUPPORTERS, SPONSORS & VOLUNTEERS

EDUCATION & TRAINING

In 2022

Region X CHCs

participated in NWRPCA Education & Training offerings

Attendees participated in 2022 offerings and were awarded a total of 1,150 CEU credits through the following NWRPCA trainings:

ANNUAL CONFERENCES:

- Western Forum for Migrant and Community Health in February
- Spring Summit + Annual Membership Meeting in May
- Partners in Care Conference in August
- Fall Primary Care Conference in October

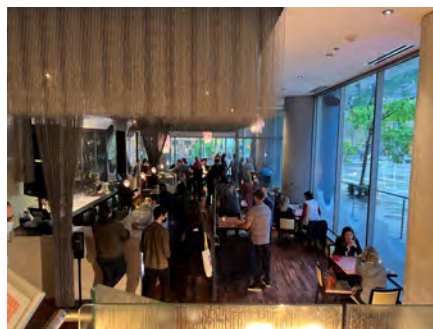
IN-PERSON TRAININGS:

• **Northwest Public Health-Primary Care Leadership Institute**, in partnership with the Northwest Center for Public Health Practice, offers a nine-month program for public health and primary care leaders. Program participants work through a problem-based learning curriculum to build collaborative leadership skills for best addressing population health.



VIRTUAL TRAININGS:

- Core Competencies for First Time CHC Managers & Supervisors in February
- Population Health Academy in April
- Workforce Workshop in May
- Population Health Academy in May
- Core Competencies for First Time CHC Managers & Supervisors in May
- Population Health Academy Webinar 1 In June
- Population Health Academy Webinar 2 In June
- Population Health Academy Webinar 3 In June
- Population Health Academy Webinar 4 In June
- Beyond Core Competencies: Next Level Skills Workshop In July
- Core Competencies for First Time CHC Managers & Supervisors in July
- UDS Training in November



.....

NWRPCA offers professional development opportunities for CHC staff, leaders and board members. The program aims to provide an “educational home” for CHC professionals.

.....

2022 PRIMARY CARE CONFERENCE HIGHLIGHTS

2022 Spring Summit + Annual Membership Meeting May 15-17 | Seattle, Washington

With **191 attendees**, Spring Summit 2022 centered around heart, value, and movement. The Spring Summit also hosted NWRPCA's Annual Membership Meeting and Award Ceremony.



Top 5 In-Person Sessions

1. Decreasing Stress, Increasing Satisfaction: Integrating CHWs into Care Teams
2. Leading a Trauma-Informed Organization
3. Alaska PCA Apprenticeships
4. FQHC Billing Considerations to Help Insure Optimal Revenue
5. Fiduciary Duties & Governance Responsibilities for an FQHC

2022 Fall Primary Care Conference October 15-18 | Denver, Colorado



348 attendees joined us in Denver, Colorado for our Fall Primary Care Conference. The Fall Primary Care Conference is a collaboration between NWRPCA and the Community Health Association of Mountain/Plains States (CHAMPS). The program was hybrid with both in-person and virtual to accommodate any safety or travel concerns of our membership.

Top 5 In-Person Sessions

1. Extending Health Center Services with Medical Respite Care for Patients Who Are Homeless FL22
2. Un-Silo Opioid Use Disorder Treatment to Improve Health Outcomes FL22
3. Emerging Federal Policy Landscape and the Health Center Program Why Your Voice Matters FL22
4. Workforce Benchmarking Trends Salary Survey Results from Region 18 FL22
5. Combating Implicit Unconscious Bias Toward LGBTQIA People FL22



Conferences, Workshops & eLearning

Education and training is delivered through conferences, workshops, webinars, and eLearning. We design and offer three cornerstone annual conferences; provide stand-alone intensive workshops on specific topics; and conduct both live and recorded webinars as well as online learning courses for CHC staff who are unable to attend in-person conferences and workshops.



NWRPCA Learning Vault

The Learning Vault is a centralized place for all conference and training content. There is currently a total of 1,595 sessions, online learning tutorials, and recorded webinars in the Learning Vault. In 2022 we added 261 offerings with a total of 7,678 total views. To date, the Learning Vault has a total of 9,414 total users.

PARTNERS, SUPPORTERS, SPONSORS & VOLUNTEERS
BUSINESS INTELLIGENCE
COMMUNITY HEALTH IMPROVEMENT
CONFERENCE HIGHLIGHTS

WORKFORCE DEVELOPMENT

A.T. Still University School of Osteopathic Medicine in Arizona – NWRPCA Campus

NWRPCA serves as a partner site for ATSU SOMA, a unique and innovative medical school that provides students with opportunities to gain health center-based training and clinical experiences through a community partnership model that places students in 1 of 16 health center-based partner sites throughout the country.

Located in Portland, NWRPCA’s partner site works closely with area health centers including

- Virginia Garcia Memorial Health Center
- Sea Mar Community Health Centers
- Multnomah County Health Department
- NW Human Services
- Outside In
- Clackamas County
- Yakima Valley Farm Workers Clinic



Since the first graduating class of 2011, we have 80 graduates from our campus who have completed residency and joined the physician workforce. Of those:

- 21 (26%) are working in Oregon
- 34 (43%) are working in Region X- with 9 in WA, and 2 each in AK and ID.
- 38 (48%) are working in underserved areas
- 39 (49%) are FM docs
- 59 (74%) are in primary care
- 14 (19%) are in FQHCs

Education Health Center Initiative (EHCI)

NWRPCA continued its partnership with the Community Health Association of Mountain/Plains States (CHAMPS) to co-sponsor the Education Health Center Initiative (EHCI). EHCI provides consulting services, educational materials, and information about developing relationships between health centers and residency programs. The EHCI partnership has conducted research, developed informational resources, and sponsored trainings at both the regional and national levels on the Education Health Center model.): 2022 saw EHCI’s largest consulting hours ever. The contracts and work is around two main focus points: THC/GME Teaching Health Centers/Graduate Medical Education and the other is HP-ET programming Health Professions Education and Training or HRSA related activities. EHCI presented at the THCPD annual meeting and for ACU on the financial costs of starting a THC and a look at the EHCI guide.



Northwest Public Health & Primary Care Leadership Institute

In collaboration with the Northwest Center for Public Health Practice (region X’s HRSA-funded public health training center), the Northwest Public Health and Primary Care Leadership institute had another successful cohort in 2022! With a focus on adaptive leadership, systems thinking, and health care transformation, the Leadership Institute’s aim is to improve population health and health equity by supporting leaders to better understand and leverage collaborations and cross-sector partnerships. 24 scholars from around the region convened in March and September in Seattle to learn about the intersection between public health and primary care using a health equity focus and an understanding of the life-course perspective to frame leadership development. We are excited to be able to expand our program to reach more people in the coming years.

Health Professions Education & Training

In 2020, NWRPCA began health professions education and training (HP-ET; or “Training in Place”) programs in Region X. 2022 saw the creation of the Health Professions Education and Training Advisory Committee, a coalition of CHC advocates from across the nation. It later evolved to focus on Region X and is open to all CHC staff invested in furthering their HPET goals. The group shares best practices, feedback, and creates peer-to-peer support programs. While on track to meet four times a year, feedback suggests more frequent meetings and online engagement options.

COMMUNITY HEALTH IMPROVEMENT

Community Health Worker Institute

In 2022, the Community Health Worker (CHW) Institute continued to develop and expand its curricula and technical assistance offerings. The Institute now offers presentations and workshops on CHW Supervision 101 and 201, Health Literacy, CHW Boundaries and Safety, CHW Integration into Primary Care Teams, and is developing content for Public Health and clinical CHW trainings.

In addition, the Institute has developed a “Clinical CHW Training Series” – a 75-minute introductory presentation and 3-hour, hands-on workshop to help CHCs understand and develop workflows, patient panels, and supervision practices that will ensure successful integration of CHWs into their primary care teams.

CHW Peer Learning Workgroup

The CHW Institute hosts a monthly “CHW Peer Learning Workgroup” that regularly has 25 attendees. Meetings alternate monthly between a resource-sharing meeting and a training meeting, with training topics as varied as health literacy, self-care, resilience, and meeting facilitation. By participant majority request, the meeting is held in Spanish, and the Institute provides simultaneous interpretation for those who prefer to participate in English only. This has been perceived by participants as a commitment to language inclusivity and diversity, and the response has been overwhelmingly positive.

Immigration & Public Charge

NWRPCA proudly stands alongside our CHCs and partners in expressing opposition to the new public charge rule. Many of our region’s CHC patients and local communities are significantly impacted by this development. NWRPCA hosted and convened a one-day free Immigration and Public Charge Training in Portland, OR, with over 50 colleagues and close partners in attendance, and is part of the National Health Center Immigration Workgroup and the Protecting Immigrant Families (PIF) Campaign. NWRPCA is committed to sharing resources from key Immigration & public charge experts, providing training, coordinating public charge office hours with subject matter experts and advocating bold public policy.

HRSA Community-Based Workforce Grant 2022

NWRPCA’s HRSA Community Based Workforce grant to provide COVID-19 vaccine education and support to farmworkers is winding down and will be completed by July 2023. The grant has been managed through the CHW Institute, with sub-awards going to four partner organizations, Sea Mar, The Next Door, Inc. Virginia Garcia Memorial Health Center, and Yakima Neighborhood Health Services.

From September 2021 through February 2023, project partner CHW teams “touched” over 54,500 community members in the form of vaccine-related outreach events, radio PSAs, face-to-face COVID-19 education, and referrals to social service, primary care, and health insurance resources in their communities. This graph shows the extent of their SDOH referrals, and is an example of the breadth and variety of the work CHWs do outside of – and in addition to – the limited scope of categorical grant funding.

Western Forum for Migrant and Community Health

The 2022 Western Forum for Migrant and Community Health held in Portland, OR brought together nearly 250 health care and public health professionals from across the region. The 2022 theme, “Adelante: Building Resilience & Strength for a Healthy & Just Recovery”, recognizes the importance resilience and strength for building a healthy and just recovery for the communities we are a part of and serve. We engaged in three days of sessions with topics related to CHWs, social determinants of health, community partnerships, mental health, and agricultural workers.



BUSINESS INTELLIGENCE

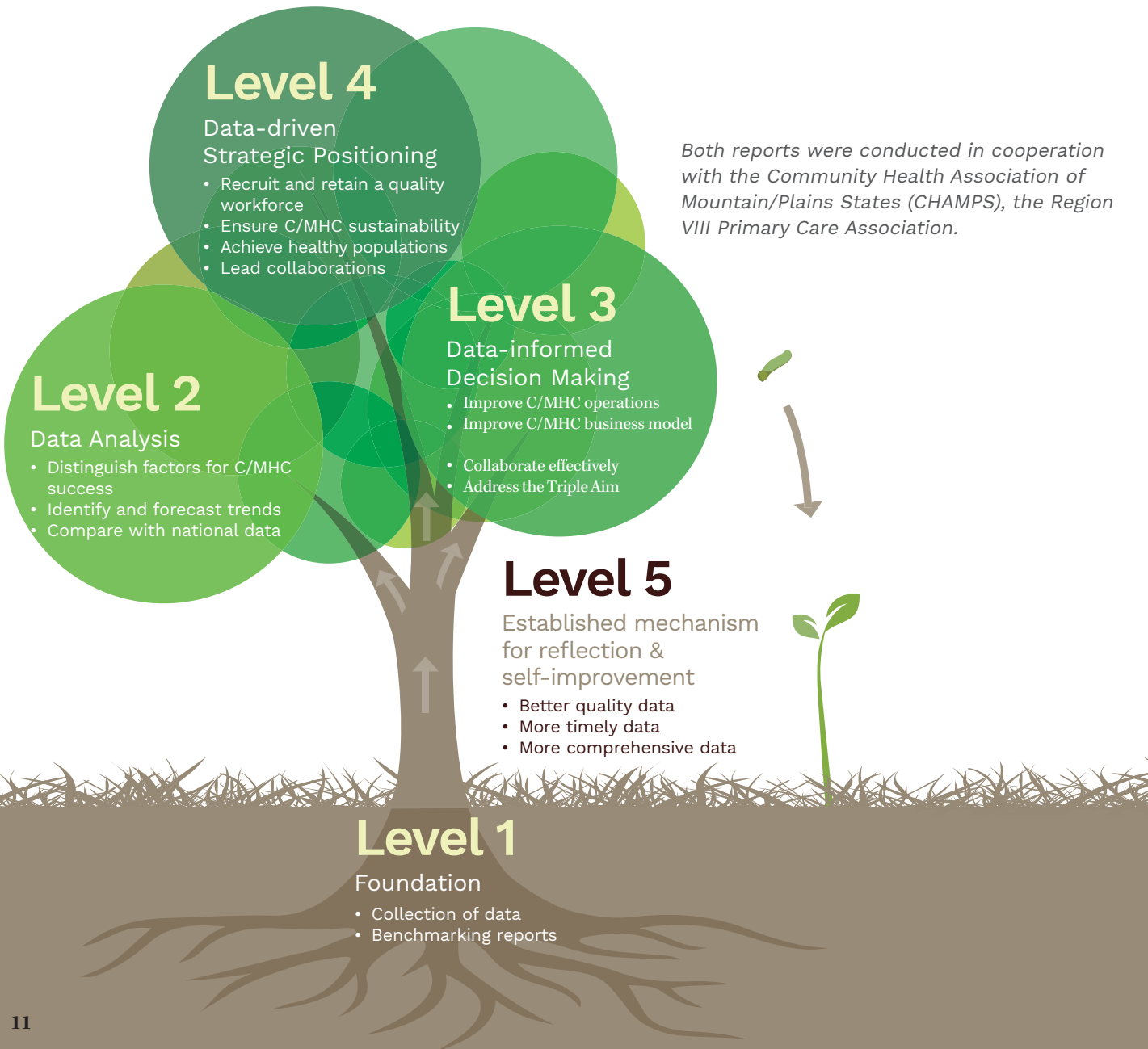
NWRPCA works with key partners to leverage data in pursuit of the Institute for Healthcare Improvement's Triple Aim: improving the patient experience of care, improving the health of populations, and reducing per capita costs.

The Annual Measure of Finance, Operations, and Productivity (AMFOP) Report

In prior years produced in cooperation with CliftonLarsonAllen (CLA), a well-known and respected national CPA firm serving many C/MHCs, this report provides annual benchmarking for operational performance metrics. The AMFOP report is shared and discussed at the annual CHAMPS/NWRPCA Fall Primary Care Conference. In 2022 we did not produce an AMFOP report: we spent the year exploring options for providing more interactive access to benchmarking data for our Region X CHCs.

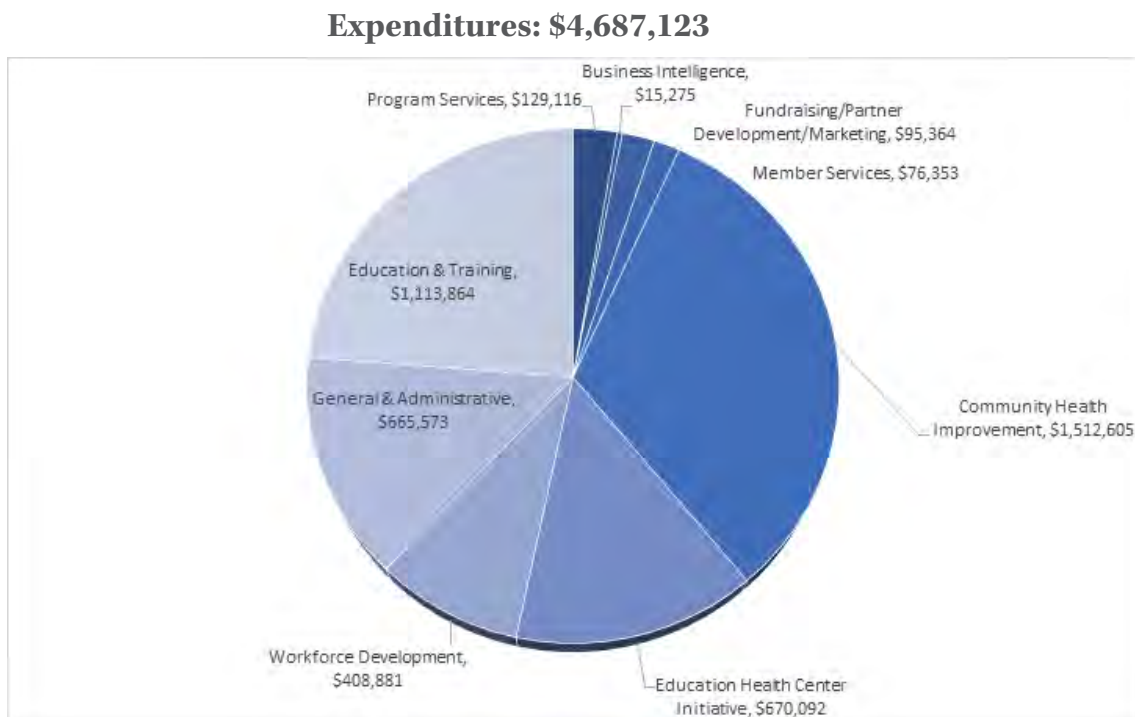
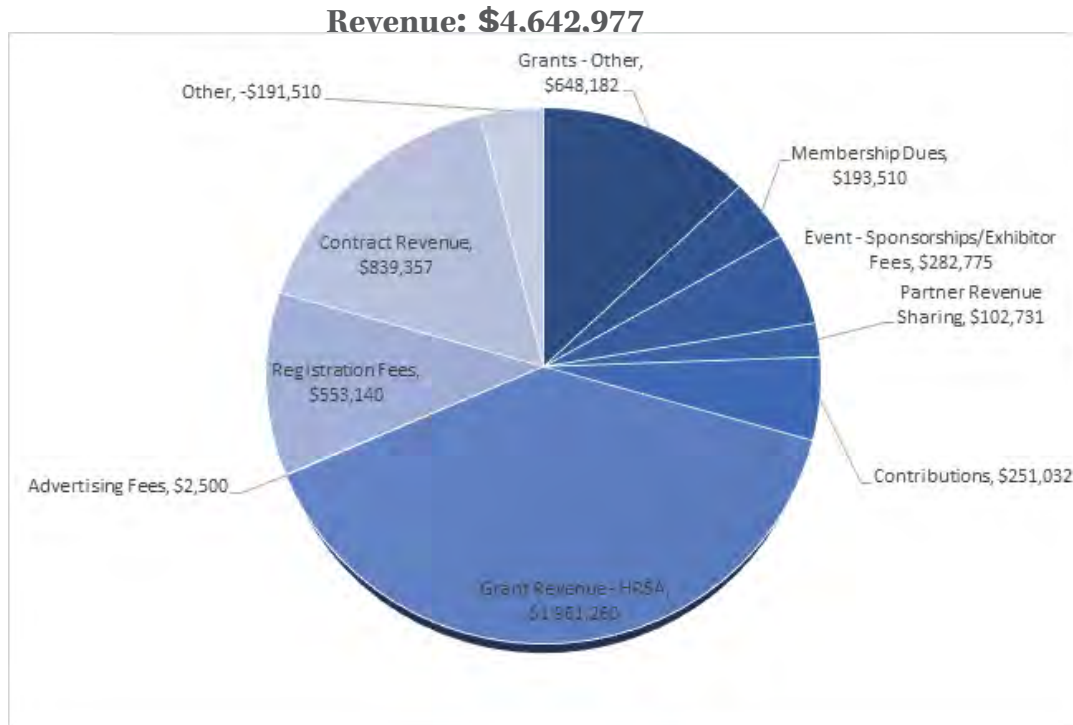
The Region X Salary and Benefits Survey

Conducted in cooperation with the Community Health Association of Mountain/Plains States (CHAMPS), the Region VIII Primary Care Association, this survey identifies trends in the marketplace and provides information specific to C/MHCs. Aggregate data and trends are shared and discussed at the annual CHAMPS/NWRPCA Fall Primary Care Conference.



OUR 2022 FINANCES: REVENUE VS EXPENDITURES

In the 2022 fiscal year, NWRPCA operations delivered positive net revenue, and added new volunteers. Our dedicated staff and volunteers designed and implemented essential programs and services to improve health outcomes and support CHCs throughout the Northwest.



| Corporate Partners | Revenue Share 2022 | Revenue Share: Total 2014 to 2022 |
|---|--------------------|-----------------------------------|
| McKesson Value in Purchasing (ViP) Agreement | \$50,000 | \$159,934 |
| Henry Schein Medical Division Value in Purchasing (ViP) Agreement | \$34,060.33 | \$182,795 |
| Nonstop Health Value in Benefits (ViB) Agreement | \$8,086 | \$22,462 |
| Combined Revenue Share | \$67,146 | \$365,191 |

PARTNERS, SUPPORTERS, SPONSORS & VOLUNTEERS

NWRPCA introduces key partners to Northwest CHC leadership and encourages exhibitors to learn alongside attendees at the conferences, thereby creating opportunities to build long-term, trusting relationships. The support of key professional organizations with expertise in technical, legal, insurance, and recruiting areas made our 2022 conferences possible.

2022 Annual Sponsors

Annual sponsors provide support for NWRPCA operating expenses while bringing knowledge and expertise in the primary care sector, including lab solutions, insurance options, smart purchasing, responsible banking services, and more.

PLATINUM SPONSOR: \$ 25,000



2022 Conference Sponsors

\$25,000 and over

AHECWW in partnership with NIH All of Us Research Program

\$10,000 to \$24,000

Alidade, Inc
Community Health Ventures
Unite Us
Washington Department of Health

\$7,500 to \$9,000

Mutual of America Financial Group

\$5,000 to 7,499

Amerigroup Washington
California Health Care Foundation
i2i Population Health
Pacific Source Washington Health Plan
Quest Diagnostics

\$2,500 to \$4,999

340Basics Inc
Rx Abuse Leadership Institute
Anthem Blue Cross of Washington
Array BH
BlueNovo, Inc
Greg Faktor & Associates
Hudson Headwaters 340B
i2i Population Health
LocumsMart
ModernaTX Inc
Moss Adams LLP
Neenan Archistruction
Nonstop Health
Pacific Companies
PointCare LLC
Scribe-X LLC
University of Washington Psychiatry Consultation Line
Washington State Health Care Authority
Waystar

\$1,000 to \$2,499

340Best
INM PC Task Force
Intrado
The Medcor Group, Inc
PacificSource
Pacific Northwest Agricultural Safety and Health (PNASH) Center
UW Psychiatry Consultation Line
WA State Allied Health Center of Excellence

Volunteers support NWRPCA'S mission, events and programs. We appreciate all those who donated their time in 2022

LOOKING FORWARD



NWRPCA's Departmental Priorities for 2022 & Beyond:

EDUCATION & TRAINING

NWRPCA is focusing our upcoming trainings and conferences on what our members identified as their top priorities. We look forward to meeting in person in Seattle and Long Beach for our three major conferences. Our Partner's in Care conference will be held virtually in partnership with SEA MAR, Yakima Valley, and the Washington Association. 2023 will also bring new and exciting trainings focusing on workforce and SDOH/Population Health Management. The launch of our new Learning Management System is expected to take place late 2023, which will evolve our offerings and provide members with more ways to learn that is relevant and timely.

DEVELOPMENT

Curate a partnership portfolio to support member CHC sustainability through financial best practices, technological interoperability and cybersecurity requirements for the CURES Act, data compliance and reporting, pathways to Value-Based Care, and workforce benefit innovations and management skills. New this year will be our efforts to understand how to apply equity to advance partnership inclusion and diversity.

COMMUNITY HEALTH IMPROVEMENT

Will continue to grow the portfolio of Training and Technical Assistance available through the CHW Institute, including training that supports CHWs to build their skills and competencies to work effectively in clinical settings, supporting health centers with integrating CHWs into care teams (including understanding scope and roles of CHWs), and developing resources that help build the case for sustainable financing of the CHW workforce.

WORKFORCE

Will be greatly expanding their reach through dynamic partnerships, leveraging data from various sources, and developing programming to best assist health center workforce in health professions training, EHCI, and recruitment and retention.

BUSINESS INTELLIGENCE

Will be working with CHAMPS to produce a Critical Positions Salary and Benefit Survey. This smaller Survey will be particularly relevant in 2023, as it will reflect the effects of the COVID-19 pandemic on turnover and salary of CHC staff.

2022 NWRPCA MEMBERSHIP

As a membership association, NWRPCA views our members as our greatest asset and our first priority. All the services and programs we provide, though, are available to all CHCs in federal Region X—Alaska, Idaho, Oregon, and Washington.

ALASKA MEMBERS

- Anchorage Neighborhood Health Center
- Bethel Family Clinic
- Bristol Bay Area Health Corporation
- Camai Community Health Center
- Copper River Native Association
- Council of Athabascan Tribal Governments
- Cross Road Medical Center
- Dahl Memorial Clinic
- Eastern Aleutian Tribes
- Girdwood Health Clinic
- Ilanka Community Health Center
- Iliuliuk Family and Health Services, Inc.
- Interior Community Health Center
- JAMHI Health & Wellness
- Kodiak Area Native Association
- Kodiak Community Health Center
- Mat-Su Health Services
- Peninsula Community Health Services of Alaska
- SE Alaska Regional Health Consortium
- Seward Community Health Center
- Southcentral Foundation
- Sunshine Community Health Center
- Tanana Chiefs Conference
- Yakutat Community Health Center
- Yukon-Kuskokwim Health Corporation

OREGON MEMBERS

- ATSU Osteopathic Medical Students
- Aviva Health
- Cascadia Health
- Community Health Centers of Benton & Linn Counties
- Clackamas County Community Health
- Coast Community Health Center
- Columbia River Community Health Services
- Klamath Health Partnership
- La Clinica
- La Pine Community Health Center
- Community Health Centers of Lane County
- Lincoln County Health and Human Services
- Mosaic Medical
- Multnomah County Health Department
- Native American Rehabilitation Association of the Northwest
- Neighborhood Health Center
- Northwest Human Services, Inc.
- OHSU Family Medicine at Richmond
- OCHIN
- One Community Health
- Outside In
- Rinehart Clinic
- Rogue Community Health
- Siskiyou Community Health Center
- Tillamook County Community Health Centers
- Virginia Garcia Memorial Health Center
- Wallace Medical Concern
- Waterfall Community Health Center
- Winding Waters Clinic

IDAHO MEMBERS

- Adams County Health Center
- Community Council of Idaho
- Family Health Services
- Glenns Ferry Health Center
- Grand Peaks Medical Dental
- Health West
- Heritage Health
- Kaniksu Health Services
- Marimn Health
- Terry Reilly Health Services

OTHER MEMBERS

- National Center for Farmworker Health

WASHINGTON MEMBERS

- Arcora Foundation
- CHAS Health
- Columbia Basin Health Association
- Columbia Valley Community Health
- Community Health Care
- Community Health Center of Snohomish County Community Health of Central Washington
- Community Health Plan
- Country Doctor Community Health Centers
- Cowlitz Family Health Center
- Family Health Centers
- HealthPoint
- International Community Health Services
- Lake Roosevelt Community Health Centers
- Mattawa Community Medical Clinic
- Moses Lake Community Health Center
- National Network of Libraries of Medicine, Pacific Northwest Branch
- Neighborcare Health
- North Olympic Healthcare Network
- Northeast Washington Health Program
- Peninsula Community Health Services
- Sea Mar Community Health Centers
- Seattle Indian Health Board
- Seattle King County Department of Public Health
- Tri-Cities Community Health
- Unity Care NW
- Valley View Health Center
- Yakima Neighborhood Health Services
- Yakima Valley Farm Workers Clinic

We are proud to work with allied organizations including Region X PCAs: Alaska Primary Care Association, Idaho Primary Care Association, Oregon Primary Care Association, and Washington Association for Community Health

